

Integrity. Dedication. Professionalism.  
OFFICE SPACE FOR LEASE

# 1339 Wellington St., Ottawa



## Be a part of the action in Wellington Village!

**Price:** \$14.00/sf  
**OPC:** \$18.12/sf

Suite 201 - approx. 2,873 sf  
Suite 205 - approx. 1,739 sf

\* These units are being measured and will be updated shortly.

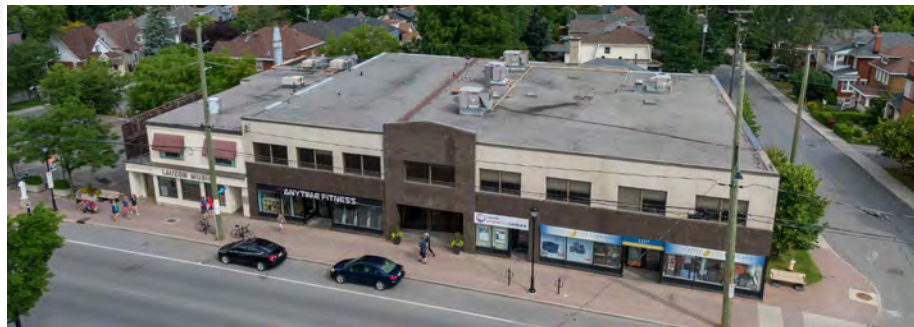
**Price:** \$12.00/sf GROSS  
Unit B1 - 1,000 sf

Emeh Essien, Leasing Manager  
District Realty

613-759-8383 ext. 228  
emeh@districtrealty.com  
leasing@districtrealty.com

Spacious office suites available in the heart of Wellington Village, the perfect location for businesses desiring a lively and convenient location that is easy to access by car and public transportation. Daily cleaning services and all utilities included. Parking available on-site.

Wellington Village and neighbouring Hintonburg are popular evening destinations for dining, entertainment, and cultural events. Home to many independent shops, unique eateries, and beautiful galleries.



1 1339 Wellington Street, Ottawa

District Realty Corporation Brokerage  
[districtrealty.com](http://districtrealty.com)

The information as herewith enclosed has been obtained from sources we believe to be reliable, but we make no representation or warranties, express or implied, as to the accuracy of the information. All references to square footage and other information contained herein are approximate and subject to change. Prospective Purchasers/Tenants shall not construe the information as legal advice. All properties are subject to change or withdrawal without notice.







## HIGHLIGHTS

- Great amenities on your doorstep and in the surrounding area
- Walk Score of 94, "Walker's Paradise"
- 5 minute drive to Highway 417 going east and west
- Parking on-site
- Routes 11, 16, and 153 stop at the door
- 10 minute walk to Tunney's Pasture Station (All major bus routes, plus LRT)

Emeh Essien, Leasing Manager  
District Realty

613-759-8383 ext. 228  
emeh@districtrealty.com  
leasing@districtrealty.com