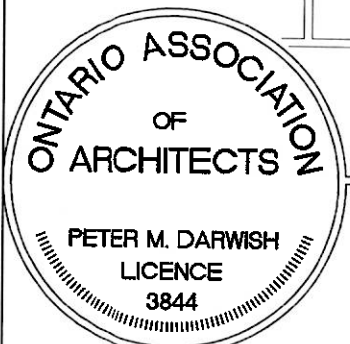


SUITE 230
1594 S.F.

PRELIMINARY
NOT FOR CONSTRUCTION



PETER DARWISH ARCHITECT
10 Castlethorpe Crescent
Nepean, Ontario K2G 5P5
Tel/Fax: (613) 226-6874

CONTRACTOR TO CHECK AND VERIFY ALL PROJECT DIMENSIONS, CONDITIONS, AND QUANTITIES.
ALL DISCREPANCIES ARE TO BE BROUGHT TO THE IMMEDIATE ATTENTION OF THE ARCHITECT.
DO NOT SCALE THIS DRAWING.

Project
BELL MEWS
2039 ROBERTSON ROAD
NEPEAN, ONTARIO

Date		Scale	Drawn By	Checked By
JAN 23/20		1/8"=1'-0"	PMD	PMD
Filename		Drawing #		
BM230-238A3		A1R3		