



Office Space **FOR LEASE**

2249 Carling Avenue,
Ottawa



Integrity. Dedication. Professionalism

District Realty
Corporation Brokerage
districtrealty.com

The information as herewith enclosed has been obtained from sources we believe to be reliable, but we make no representation or warranties, express or implied, as to the accuracy of the information. All references to square footage and other information contained herein are approximate and subject to change. Prospective tenants shall not construe the information as legal advice. All properties are subject to change or withdrawal without notice.

2249 Carling Avenue

Ottawa

Price

\$13.50/sf

OPC

\$18.24/sf



Key Features

Zoning AM

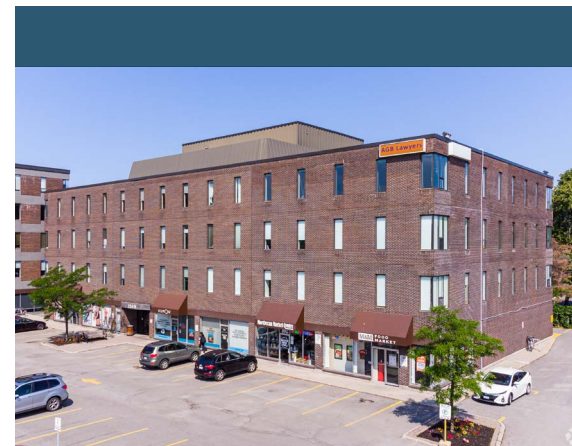
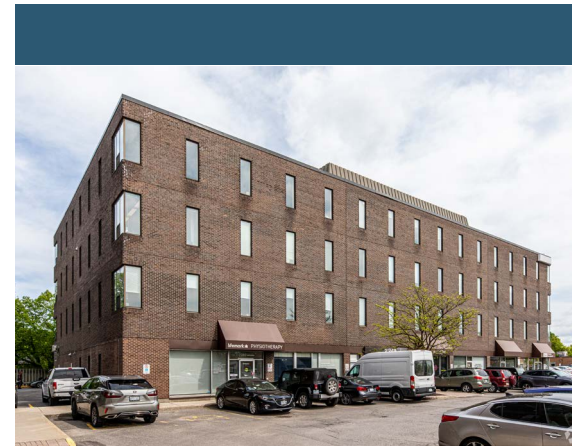
Parking Ratio 1/1,500sf; \$95/month + HST

- Close to HWY 416 & 417
- Bus stop on-site
- Valet parking for tenants
- Supervised visitor parking
- Free fitness centre for tenants

Highlights

Professionally managed office suites available for lease in Ottawa's thriving west end. These bright, sun-filled spaces offer elevator access and a professional environment ideal for businesses seeking comfort and convenience. A fully equipped shared boardroom is available upon request for meetings and client presentations.

Tenants benefit from an array of premium on-site amenities, including valet parking and a complimentary fitness centre complete with showers. The property also features a range of everyday conveniences including a hair salon, café, pharmacy, and mini-market.



Availability

SUITE	SIZE	PRICE	Op. Costs	COMBINE UNITS	OCCUPANCY
412	2,305 SF	\$ 13.50/sf	\$ 17.94/sf		Nov. 1, 2026
423	2,515 SF	\$ 13.50/sf	\$ 17.94/sf		Immediate



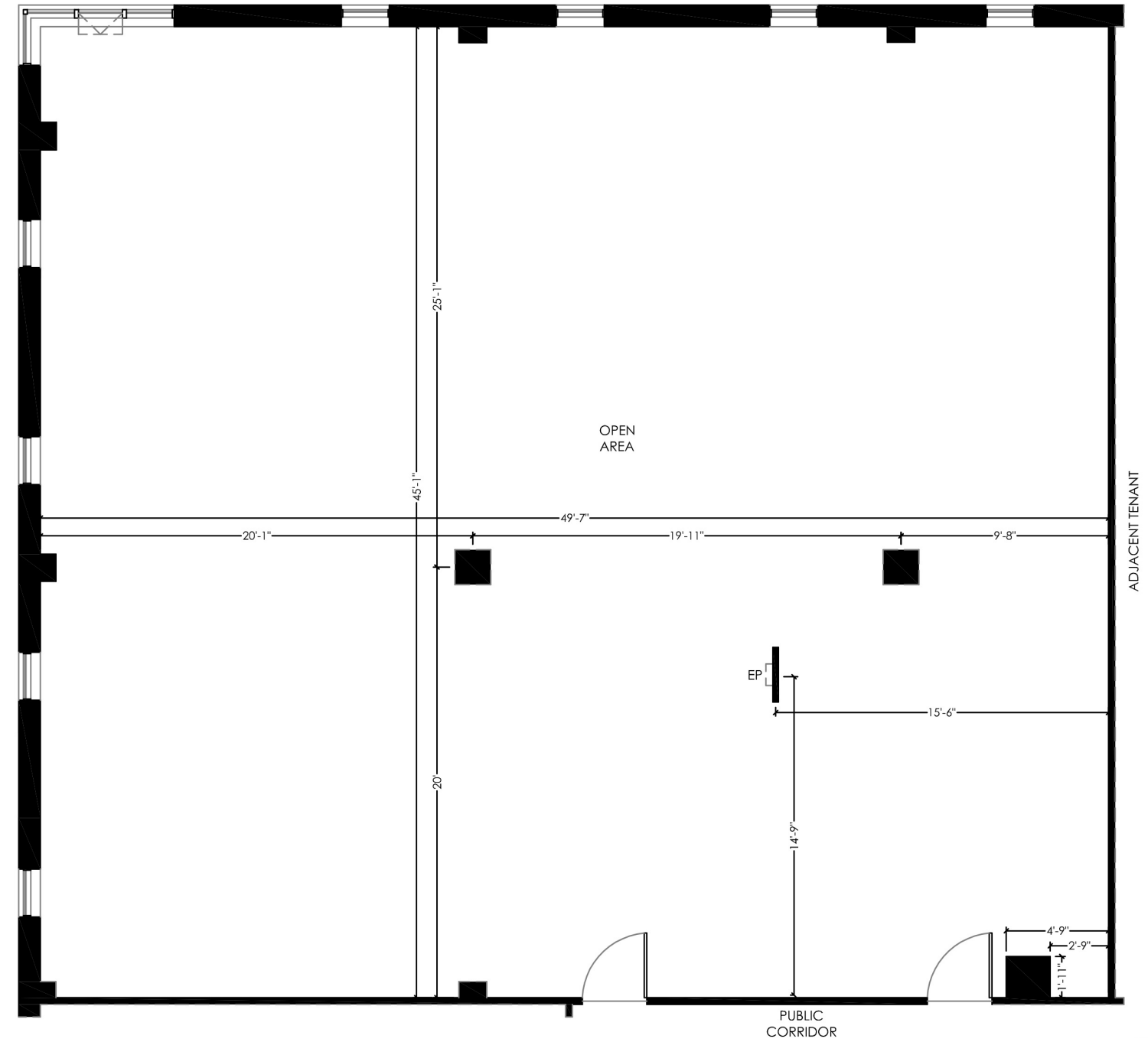
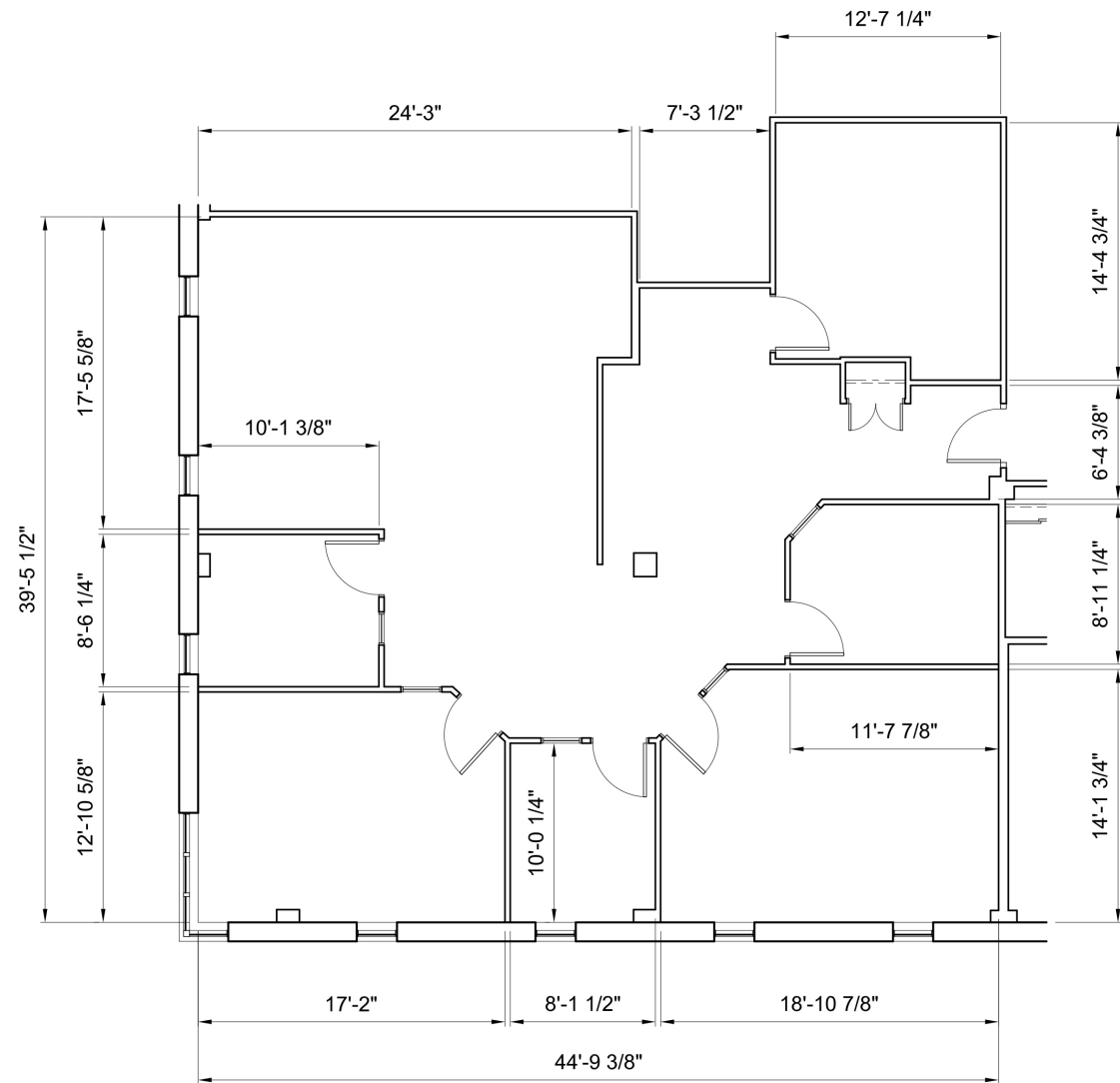
CONTACT

613-759-8383
leasing@districtrealty.com

District Realty Corporation Brokerage
districtrealty.com

Jason Shinder, Broker of Record
CEO

Charles Mirsky, Broker
COO - Brokerage Services



AREA MAP

Strategically positioned at the prominent intersection of Carling Avenue and Woodroffe Avenue, the property offers immediate access to Highway 417, providing seamless connectivity for commuters travelling between downtown Ottawa and Kanata. The building is a short walk to Lincoln Fields Station, with the LRT connection scheduled to open in 2026, and benefits from an on-site bus stop for added convenience.

Tenants enjoy close proximity to a full complement of amenities at Carlingwood Shopping Centre, including Canadian Tire, Staples, and a broad mix of retail and service offerings to support day-to-day business needs.

Your Brand, Front and Centre

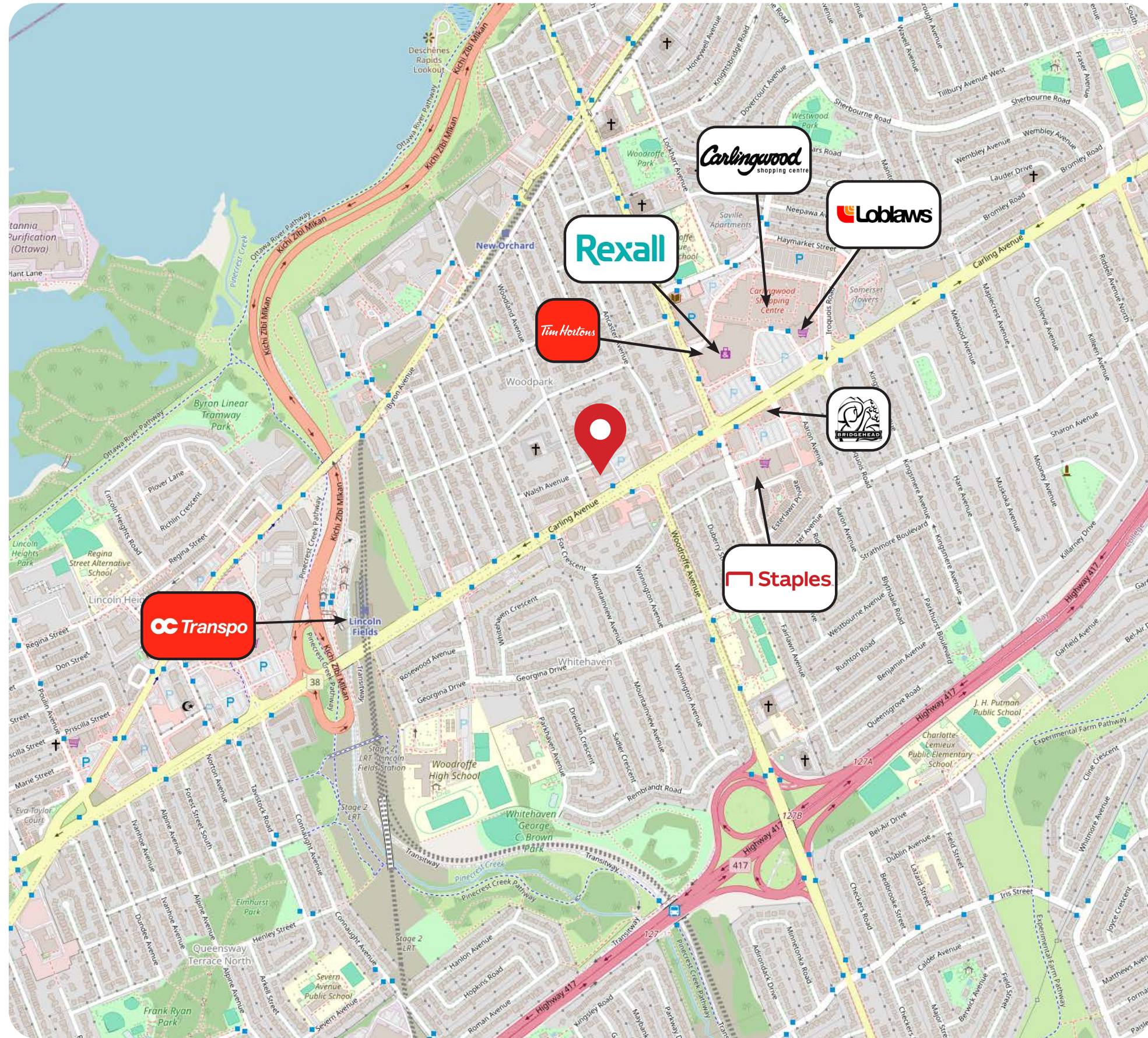
Take advantage of opportunities for prime pylon signage with prominent exposure near the busy intersection of Carling and Woodroffe Avenue, offering exceptional visibility to thousands of vehicles daily – a powerful way to showcase your brand.

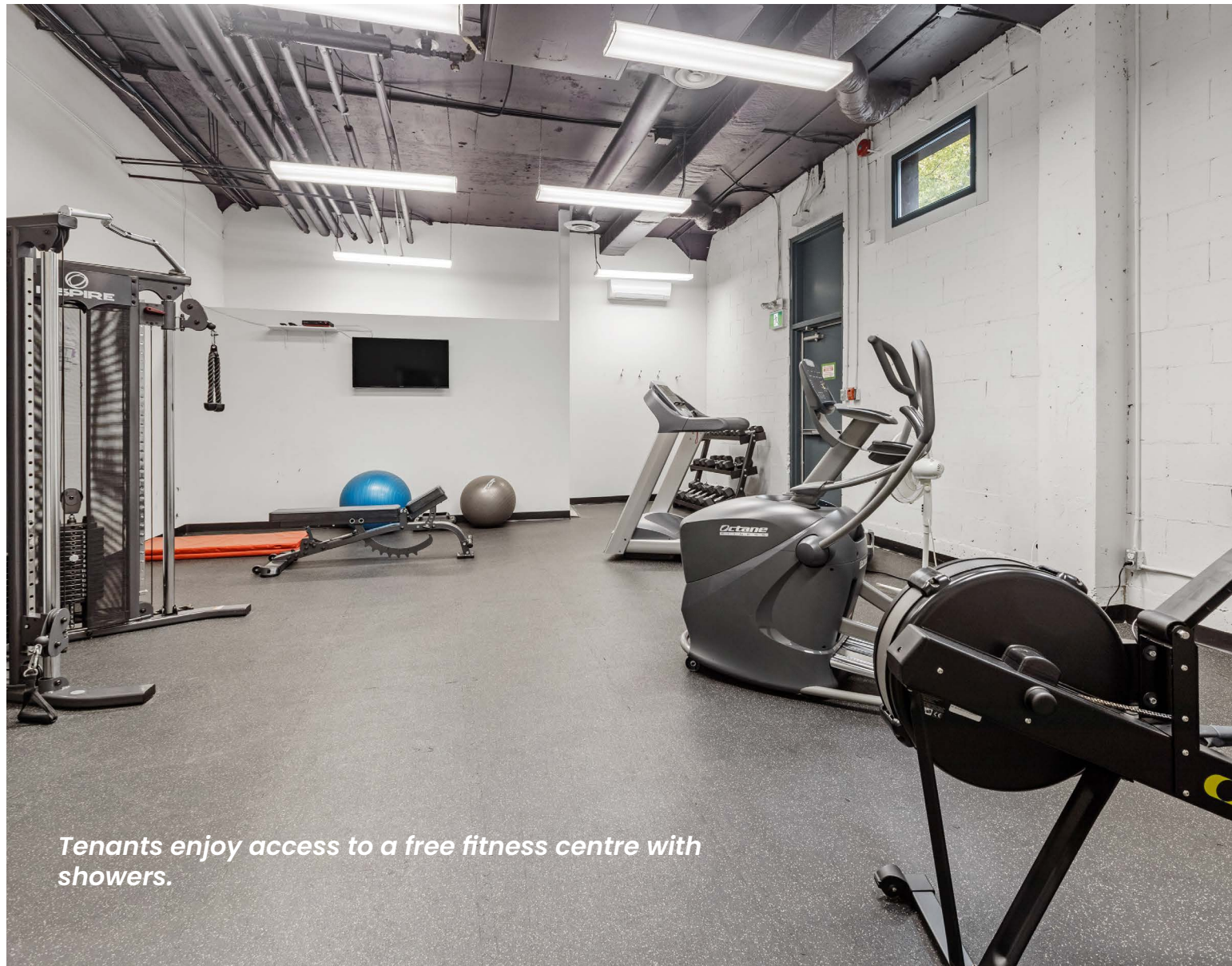
Connected for Success

Set within a dynamic and well-connected business node with direct access to Highway 417, the property offers effortless connectivity between downtown Ottawa and the city's west end. Steps from transit and walking distance to the future Lincoln Fields LRT station, the location is designed for modern commuting.

Convenience at Your Doorstep

2249 Carling Avenue is embedded in a highly amenitized corridor that supports both daily operations and employee convenience. Carlingwood Shopping Centre is just minutes away, offering national retailers, professional services, and everyday essentials, while a variety of restaurants, banks, and fitness options are located nearby.





Tenants enjoy access to a free fitness centre with showers.



CONTACT

613-759-8383
leasing@districtrealty.com

District Realty Corporation Brokerage
districtrealty.com

Jason Shinder, Broker of Record
CEO

Charles Mirsky, Broker
COO - Brokerage Services

DEMOGRAPHICS

Population

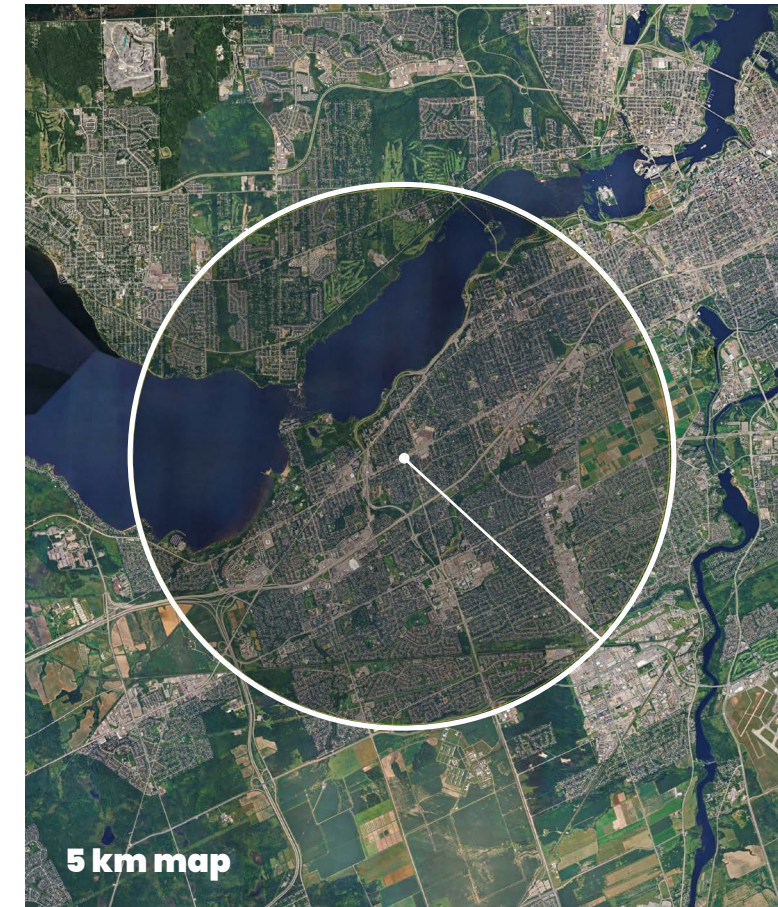
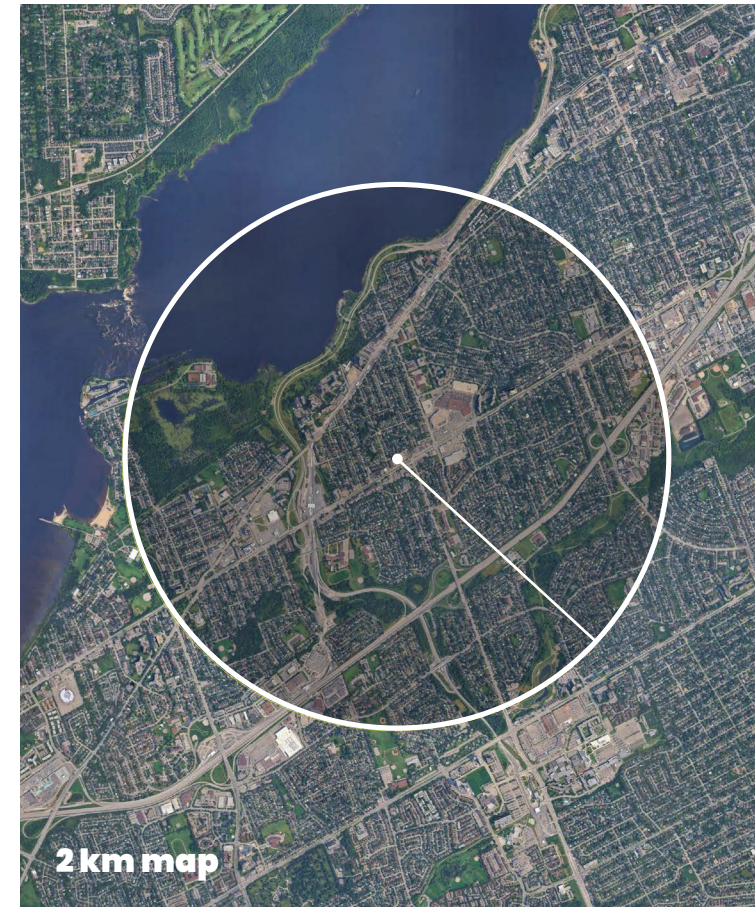
	2 km	5 km	10 km
2023 Population	35,589	186,860	505,318
2028 Population Projection	39,558	208,848	559,302
2033 Population Projection	43,250	228,694	607,284
Annual Growth 2023 - 2028	2.2%	2.4%	2.1%
Annual Growth 2023 - 2033	2.2%	2.2%	2.0%
Daytime Population	31,613	156,003	603,052
Median Age	45.6	40.7	39.2

Households

	2 km	5 km	10 km
2023 Households	16,689	79,726	227,135
2028 Households Projection	18,954	91,287	257,020
2033 Households Projection	20,901	101,062	281,683
Annual Growth 2023 - 2028	2.7%	2.9%	2.6%
Annual Growth 2023 - 2033	2.5%	2.7%	2.4%
Average Household Size	2.1	2.4	2.2
Private Households Population	34,306	183,057	493,890

Income

	2 km	5 km	10 km
Average Household Income	\$ 106,224	\$ 109,984	\$ 104,415
Median Household Income	\$ 67,316	\$ 75,707	\$ 72,128
Per Capita Income	\$ 49,812	\$ 46,926	\$ 46,933
Agg. Household Expenditure	\$ 1.7B	\$ 8.2B	\$ 22.3B
Avg. Household Expenditure	\$ 99,822	\$ 102,308	\$ 98,175
\$40,000 - \$60,000	2,885	12,351	34,828
\$60,000 - \$80,000	2,265	10,802	30,464
\$80,000 - \$100,000	1,860	9,534	27,024
\$100,000 - \$150,000	2,509	14,255	38,700
\$150,000 - \$200,000	1,425	8,127	21,396



CONTACT

613-759-8383
leasing@districtrealty.com

District Realty Corporation Brokerage
districtrealty.com


Jason Shinder, Broker of Record
CEO

Charles Mirsky, Broker
COO - Brokerage Services



20 James Street, Suite 100
Ottawa, ON., K2P 0T6

 613.759.8383

 LEASING@DISTRICTREALTY.COM